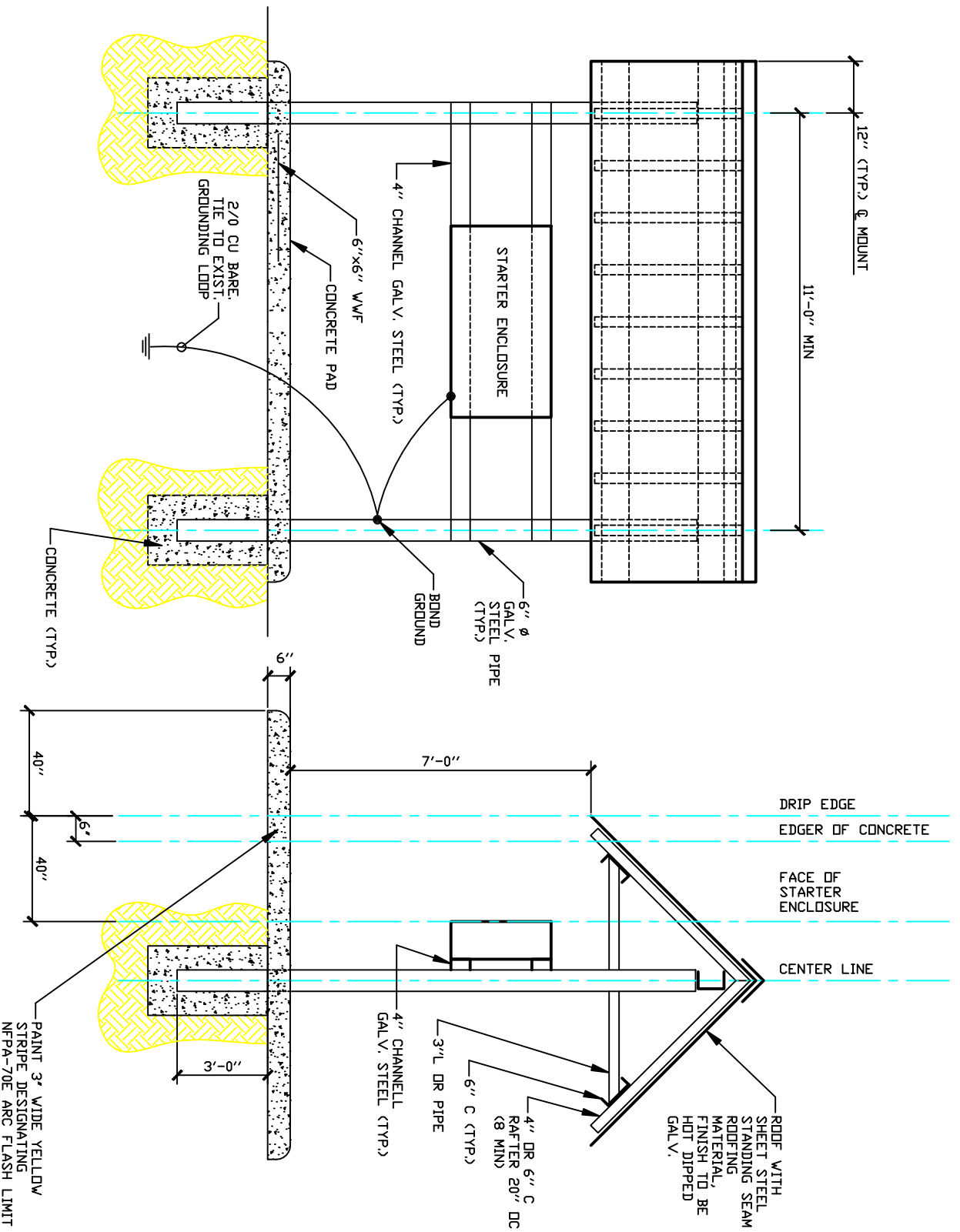


- NOTES:**
1. EACH STARTER ENCLOSURE IS TO BE SEPARATELY BONDED TO A COMMON GROUND WITH STARTER RACK FRAME AND BONDED TO EXISTING GROUNDING LOOP.
  2. EACH PIECE OF EQUIPMENT IS TO BE BROUGHT OVER TO ITS RESPECTIVE STARTER INDIVIDUALLY. AT LEAST ONE (1) BLOWER AND ONE (1) PAIR OF BUCKET ELEVATORS AND GRIT WASHER MUST BE IN OPERATION CONTINUOUSLY.
  3. BREAK OUT LOWER WIRE WAY, PULL BACK EXISTING WIRES, EXTEND EXISTING CONDUIT, MAKE WATERPROOF SPLICE, EXTEND TO NEW STARTERS.
  4. PICK UP RUN, FAULT, LOW PRESSURE AND INLET HIGH LEVEL STATUS. ADD NEW DPT-110 MOUNT IN MCB SCP, MODIFY BUBBLER TUBING TO PICK UP AND DOWN STREAM LEVEL OF THE BAR SCREEN. IMPULSE TUBING AND STAND PIPES ARE EXISTING.

**INLET FACILITY - PARTIAL GROUND FLOOR PLAN**



**NEW MOTOR RACK #5 SUPPORT FRAME  
TYPICAL CONSTRUCTION FOR LAGOON STARTER RACK**

| NO. | REVISIONS | DATE |
|-----|-----------|------|
| 1   | X         |      |
| 2   |           |      |
| 3   |           |      |
| 4   |           |      |
| 5   |           |      |
| 6   |           |      |

DRAWN BY: VU    CHECKED BY: CSM    APPROVED BY: CSM    DATE: 02/29/2008

**MOREHOUSE ENGINEERING INC.**  
HOPEWELL, NEW JERSEY 08525  
609-466-4955

Township of Bernards  
Sewerage Authority  
**CONTROL & MONITORING SYSTEM UPGRADE**  
INLET FACILITY

DATE: MARCH 10, 2008  
DRAWING #: 2746-PL-3  
SHEET 13 OF 46  
JOB #: 2746  
SCALE: N.T.S.  
0